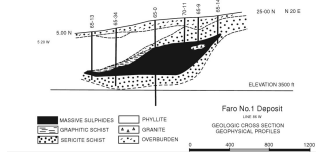


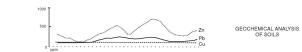
FARO

CANADA

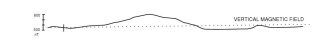
Another gravity success



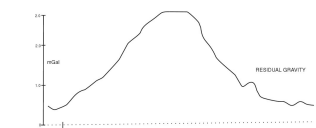
Faro is a Sedimentary Exhalative (SEDEX) Pb-Zn deposit located in Yukon.



Initial exploration lead to the discovery of a geochemical anomaly.



A magnetic anomaly coincided with the geochemical anomalies.



The Faro #1 deposit was best outlined by a gravity survey, where both magnetic and geochemical anomalies coincided.

A 2.8 mGal anomaly coincided with the thickest section of the ore body.

Preliminary calculations using the gravity results suggest a mass of 44 MMT. It was later proven to contain about 46 MMT.