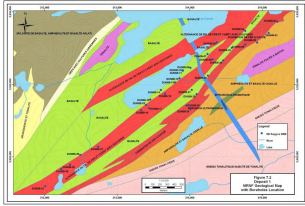


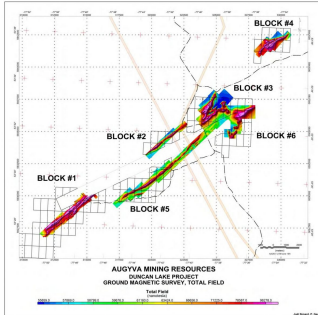
# DUNCAN LAKE

CANADA

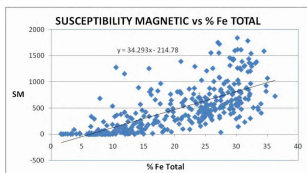
Magnetic susceptibility measurement is a useful tool for targeting iron enrichment along banded iron formation.



Located in the James Bay area, Duncan Lake is an abundant, extensive (several kilometres long) and relatively thick oxide facies banded iron formation.



Over 200 km of GPS positioned Ground magnetic surveying detailed the six blocks of the of the Duncan Lake deposit.



Magnetic susceptibility measurements were conducted on DDH core. Correlation was established between magnetic susceptibility and % of iron in the formation.

