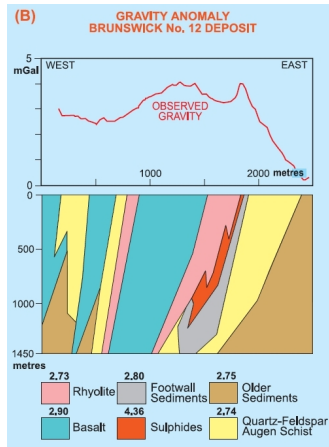


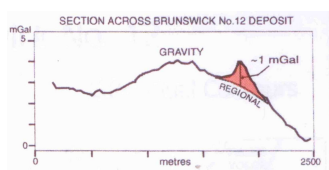
BRUNSWICK N°12

CANADA

La gravimétrie démontre l'efficacité de cet outil pour un suivi suite à un levé en EM et en MAG dans une anomalie du Camp Bathurst.



Brunswick no 12 is the largest Zn rich VMS deposit of the Bathurst Camp.



Mafic volcanic rocks produce a large, regional gravimetric Bouguer anomaly. A contrast of density caused by a massive sulphide lens produces a local peak, showing the location of the deposit.

