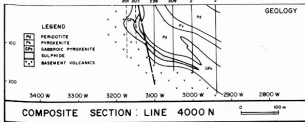


# RADIO HILL

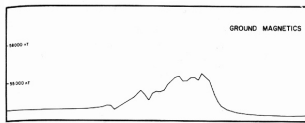
## AUSTRALIA

---

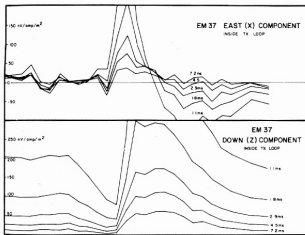
Combining Airborne, Ground and Drilling Leads to Success.



The Radio Hill deposit is a shallow dipping deposit associated with a layered ultramafic complex overlain by a mafic sequence.



A regional airborne magnetic survey detected the magnetic signature of the deposit.



A ground magnetic survey was able to define individual units in the complex.

TDEM delineated two conductors. Follow-up drilling intersecting massive sulphide mineralisation.

