

# WINSTON LAKE

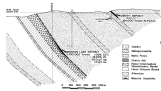
CANADA

---

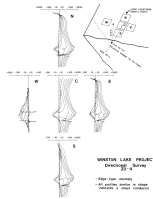
Un levé TDEM en trou de forage a permis de détecter un dépôt imperceptible.

Winston Lake deposit is located 145 km northeast of Thunderbay, Ontario, Canada.

The Winston Lake deposit is a 3.1M tonne Cu, Zn VMS deposit located at the base of a gabbro sill 300m below the surface.



Eight holes were drilled: four tested geophysical targets with negative results, the others tested the geological model. An exhalative horizon was intersected yielding 0.57% Zn and 1% Cu.



Borehole TDEM was conducted in the successful hole and detected a strong edge-type anomaly with a conductor indicated down-dip.

Based on these results drilling resumed and intersected 2.1m of massive sulphides at 300m depth grading 1.10% Cu, 19.11% Zn, 22.2g/t Ag and 0.73g/t Au.