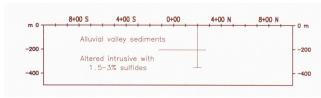


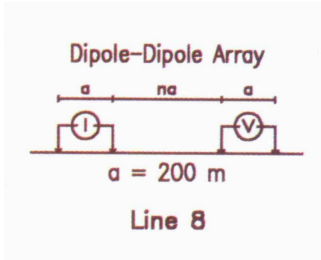
# YALGUAREZ VALLEY

## ARGENTINA

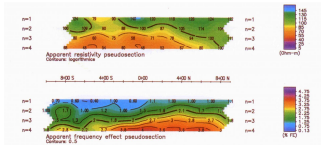
Induced polarization successfully detected the YALGUAREZ VALLEY copper porphyry beneath 200 meters of alluvium.



Yalguez Valley in Argentina, is a Cu porphyry deposit covered by 200 meters of resistive alluvium.



Because the geological model suggests a large polarizable target, a dipole-dipole configuration with  $a = 200$  m was selected to maximize penetration.



The IP survey was successful. The conventional apparent resistivity and IP pseudo-sections clearly show the altered intrusive beneath the alluvium.

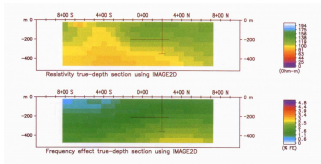


Image2D<sup>TM</sup> true-depth sections show good correlation with drilling results.