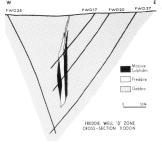


FREDDIE WELL

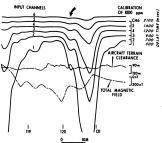
AUSTRALIA

Response of a Sulphide Deposit beneath Conductive Sediment



The Freddie Well deposit is a small VMS body located in the Archean shield of Western Australia. The deposit lies beneath deeply weathered gabbro in an arid environment.

Deeply weathered terrains can be challenging for TDEM, since variable weathering can mask basement conductors.



At Freddie Well, the large amplitude broad response is due to conductive sediments, while an adjacent anomaly with a lower decay rate corresponds to the conductive deposit.

